



# APIBECI EOP CAMPUS

Education is the most  
powerful weapon which you  
can use to change the world.



EOP CAMPUS 2025 BROCHURE





# EOP campus 2025

"EOP Campus provides specially designed programs for complete beginners in English, fostering a supportive learning atmosphere for individuals who are new to the language."





# PROGRAMS

## LITE ESL

more streamlined version of Speed ESL.

## SPEED ESL

the oldest BECI bachelor's program.

## SPARTA ESL

more structured compared to the Speed ESL course.

## TOEIC EOP

designed for students aiming to establish a solid understanding of TOEIC grammar and vocabulary.

## IELTS EOP

preparing for the IELTS test for the first time or who want to build a strong foundation for the IELTS exam.

## WORKING HOLIDAY

students getting ready for a working holiday.



# LITE ESL



LITE ESL is a more streamlined version of Speed ESL. Students engage in two hours of individual classes daily and two hours of group sessions. During class, you have the option to study or relax. Both the 1:1 CLASS and GROUP CLASS cover the same material as the SPEED ESL program.

**Level:** No Restrictions

**Class time**

- 1:1 classes – 2 classes
- Group classes – 2 classes
- Night Classes – 2 classes (optional)

**Test schedule once a month**

**LEARNING OBJECTIVES**

- In the LITE ESL course, students choose the English vocabulary they want to focus on. The goal is to study and review.

**RECOMMENDED TARGET**

- Freelancer, part-time online student, and senior language trainee.
- Students interested in studying English independently.

**LITE ESL SAMPLE SCHEDULE**

CLASS TIME	SUBJECT	CLASS TYPE
08:00~08:50		BREAK
09:00~09:50		BREAK
10:00~10:50	Listening	Group Class
11:00~11:50	Speaking	1:1 Class
12:00~12:50		LUNCH
13:00~13:50		BREAK
14:00~14:50	Reading	1:1 Class
15:00~15:50		BREAK
16:00~16:50	Grammar	Group Class
17:00~17:50		DINNER
18:00~18:50	Sound Right	Night Class
19:00~19:50		BREAK
20:00~20:50	Vocabulary	Night Class



- LITE ESL offers both 1:1 and group classes, with course content identical to the SPEED ESL program.
- Students enrolled in the LITE ESL course have the option to join and participate in Night Classes.



# SPEED ESL

The Speed ESL course, known as Semi-sparta, is the oldest BECI bachelor's program, popular among students of all proficiency levels. It covers Speaking, Listening, Reading, and Writing with a structured curriculum for effective learning.

**Level:** No Restrictions

**Class time**

- 1:1 classes – 4 classes
- Group classes – 2 classes
- Night Classes – 2 classes (optional)



Test schedule once a month

## LEARNING OBJECTIVES

- Master the four English skills – speaking, listening, reading, and writing – by participating in well-structured classes. Enhance your self-directed learning skills by engaging in complex learning activities.

## RECOMMENDED TARGET

- Individuals seeking a conducive environment to learn English freely.
- Individuals looking to utilize English for practical reasons.

## 1:1 CLASS

- Speaking – Practical and beneficial for natural communication with non-native speakers: Acquire new vocabulary and expressions.
- Reading – Enhances reading comprehension and vocabulary, with each section covering engaging and relevant topics: Receive a printed guide and explore commonly used vocabulary and idioms.
- Idioms – Understand and learn idioms commonly used by non-native speakers: Discover how idioms are structured and their meanings.
- Expression / Listening / Grammar / Writing:

*\*To enroll in these four subjects, kindly request separately during consultation with the coordinator. Available at no extra cost.*

## GROUP CLASS

- Pronunciation – This course teaches American speech rhythm, contracted words, colloquial contractions, and articulation. It focuses on mastering vowel and consonant sounds, intonation patterns, phrases, blends, and smooth transitions between nouns and verbs.
- Listening – The content spans various topics including everyday life and news, covering specific information, main points, elaboration, summarization, narrative structure, inferences, and predictions.
- Writing – We conduct a variety of writing activities to practice parts of speech, clause functions, and sentence structure.
- Grammar – Grammar classes consist of learning content within grammatical categories such as tenses, questions, and articles.

## NIGHT CLASS (OPTION)

- Vocabulary
- Speaking Pronunciation
- Fun with Conversation Grammar
- Sound Right
- Pattern English 1,2
- What Can I Say?
- Night Classes are available based on students' level and preferences.
- Each student can enroll in a maximum of two Night Classes.
- The Night Classes have a maximum capacity of 10 students.
- Registration for Night Classes is conducted locally and follows a first-come, first-served approach.

## SPEED ESL SAMPLE SCHEDULE

CLASS TIME	SUBJECT	CLASS TYPE
08:00~08:50	Writing	1:1 Class
09:00~09:50		BREAK
10:00~10:50	Listening	Group Class
11:00~11:50	Speaking	1:1 Class
12:00~12:50		LUNCH
13:00~13:50	Expression	1:1 Class
14:00~14:50	Reading	1:1 Class
15:00~15:50		BREAK
16:00~16:50	Grammar	Group Class
17:00~17:50		DINNER
18:00~18:50	Sound Right	Night Class
19:00~19:50		BREAK
20:00~20:50	Vocabulary	Night Class





This program is more structured compared to the Speed ESL course. It is designed for students who prefer controlled guidance rather than those who enjoy active learning.

**Level:** No Restrictions

### Class time

1:1 classes – 5 classes  
Group classes – 2 classes  
Night Classes – 2 classes  
(compulsory class)

**Test schedule every week**  
(including SP test)

## LEARNING OBJECTIVES

- Students identify their English communication weaknesses, and we offer top-notch, effective programs to help you quickly overcome them.

## RECOMMENDED TARGET

- Individuals aiming to enhance their speaking skills quickly
- Individuals seeking structured study sessions according to a set timetable

## 1:1 CLASS

- Speaking - Practical and beneficial for natural communication with non-native speakers: Acquire new vocabulary and expressions.
- Reading - Enhances reading comprehension and vocabulary, with each section covering engaging and relevant topics: Receive a printed guide and explore commonly used vocabulary and idioms.
- Idioms - Understand and learn idioms commonly used by non-native speakers: Discover how idioms are structured and their meanings.

Expression / Listening / Grammar / Writing:

*\*To enroll in these four subjects, kindly request separately during consultation with the coordinator. Available at no extra cost.*

## GROUP CLASS

- Pronunciation - This course teaches American speech rhythm, contracted words, colloquial contractions, and articulation. It focuses on mastering vowel and consonant sounds, intonation patterns, phrases, blends, and smooth transitions between nouns and verbs.
- Listening - The content spans various topics including everyday life and news, covering specific information, main points, elaboration, summarization, narrative structure, inferences, and predictions.
- Writing - We conduct a variety of writing activities to practice parts of speech, clause functions, and sentence structure.
- Grammar - Grammar classes consist of learning content within grammatical categories such as tenses, questions, and articles.

## NIGHT CLASS (MANDATORY)

- Vocabulary
- Speaking Pronunciation
- Fun with Conversation Grammar
- Sound Right
- Pattern English 1,2
- What Can I Say?
- Sparta course students are required to attend Night Classes.
- The subjects available for Night Classes in the Sparta course are restricted.
- Each Night Class can accommodate a maximum of 10 students.

## SPARTA ESL SAMPLE SCHEDULE

CLASS TIME	SUBJECT	CLASS TYPE
08:00~08:50	Writing	1:1 Class
09:00~09:50	Idioms	1:1 Class
10:00~10:50	Listening	Group Class
11:00~11:50	Speaking	1:1 Class
12:00~12:50		LUNCH
13:00~13:50	Expression	1:1 Class
14:00~14:50	Reading	1:1 Class
15:00~15:50		BREAK
16:00~16:50	Grammar	Group Class
17:00~17:50		DINNER
18:00~18:50	Sound Right	Night Class
19:00~19:50		BREAK
20:00~20:50	Vocabulary	Night Class



# TOEIC EOP



This course is designed for students aiming to establish a solid understanding of TOEIC grammar and vocabulary, as well as for those seeking to enhance their TOEIC skills by engaging in regular mock tests.

**Level:** Entrance score is below 250  
start with ESL first.

#### Class time

1:1 classes – 4 classes

Group classes – 2 classes

Night Classes – 3 classes

(compulsory class)

### LEARNING OBJECTIVES

- Consistently practice the TOEIC program to enhance your English proficiency in all areas: speaking, listening, writing, grammar, and vocabulary.

### RECOMMENDED TARGET

- Students who start TOEIC for the first time
- Students who want to learn TOEIC basic grammar and vocabulary firmly and develop a sense of practice

## 1:1 CLASS

- RC Part (+Review) for 2 hours (Part 5-7) – Enhancing students' TOEIC grammar skills by focusing on fundamental patterns, essential points, and guiding students on how to identify the correct answers for the comprehensive question format in the test.
- LC Part (+Review) 2 hours (Part 1-4) – Instructors share their expertise and skills to help students grasp the correct responses to questions. Emphasis is placed on enhancing listening skills through repeated exposure to the learning material until students comprehend it clearly.

\*In 1:1 classes, you have the flexibility to concentrate on the subjects that interest you, tailoring the course to meet each student's preferences. (The course can be adjusted as needed)

## GROUP CLASS

- TOEIC GC Grammar Speaking-Grammar is basic in all English courses. Grammar Speaking lessons are designed to strengthen the foundations for various areas of grammar in the TOEIC READING exam.
- TOEIC GC Listening – The GC Listening Group classes enhance students' comprehension and familiarity with the TOEIC Listening Test. They also offer effective strategies and approaches for tackling the test problems.

## NIGHT CLASS (MANDATORY)

- The TOEIC course's Night Class (Monday-Thursday) includes a 2-hour TOEIC Daily Mock test and a 1-hour TOEIC Daily Vocabulary test.

\*Daily test reviews take place in 1:1 classes the next day, while comprehensive weekly reviews are held during Friday Night Class.

## TOEIC SAMPLE SCHEDULE

CLASS TIME	SUBJECT	CLASS TYPE
08:00~08:50	Reading Part5,6	1:1 Class
09:00~09:50		BREAK
10:00~10:50	Listening Part1,2	1:1 Class
11:00~11:50	Reading Part7	1:1 Class
12:00~12:50		LUNCH
13:00~13:50	Listening Part3,4	1:1 Class
14:00~14:50	GC Speaking	Group Class
15:00~15:50		BREAK
16:00~16:50	GC Listening	Group Class
17:00~17:50	Daily Test(RC1)	Night Class
18:00~18:50	Daily Test(RC2)	Night Class
19:00~19:50		DINNER
20:00~20:50	Daily Test(Voca)	Night Class

- Night Study of all courses (24 ESL, TOEIC Basic Class, IELTS Basic Guaranteed Class) operated by Sparta Campus is compulsory participation, and the contents of the self-study are predetermined.
- If you are absent from the class without permission, you will be able to self-study on Saturday twice the amount of time you are absent on weekdays.

# IELTS EOP



The IELTS Basics Course is for first-time test takers or those building a strong foundation. It focuses on essential skills like grammar and vocabulary, offering personalized plans based on initial test results to help students reach their target scores and progress confidently. The course sets the stage for success in all four IELTS components: Listening, Reading, Writing, and Speaking.

**Level:** Entry exam score must be 3 or above

#### **Class time**

1:1 classes – 5 classes

Group classes – 2 hours

Night Classes – 2 hours

(Night classes will be from monday to thursday with 2 sets of mock tests)

#### **LEARNING OBJECTIVES**

- Build IELTS basic skills and become familiar with the test format. We help you achieve your desired score within a set period of time by intensively strengthening your English skills required for the IELTS test.

#### **RECOMMENDED TARGET**

- Learners who lack basic knowledge of IELTS and want to prepare for the test by understanding the question patterns of each test type (IELTS basic class)

#### **1:1 CLASS**

- Speaking: Enhance your English speaking skills and confidence by practicing with past exam questions. Our structured approach familiarizes you with different question types through targeted exercises.
- Reading: Develop strategies to tackle reading comprehension questions of varying difficulty levels. Gain practical experience by practicing with mock tests.
- Listening: Learn effective listening strategies, practice solving past exam question types, and engage in practical exercises to improve your listening skills.
- Writing: Receive personalized instruction on writing techniques and detailed feedback on writing assignments to enhance your writing abilities.

\*In 1:1 classes, students can focus on preferred subjects to tailor the course to their individual needs. (Class course can be change.)

#### **GROUP CLASS**

- IELTS GC Speaking: Discover effective strategies and techniques to excel in the IELTS Speaking test. Learn how to tackle challenging questions swiftly and efficiently, and get ready for the exam with in-depth explanations and sample responses.
- IELTS GC Listening: Access the most up-to-date materials needed for IELTS Listening, receive comprehensive feedback from an expert IELTS Listening teacher, and enhance your listening vocabulary.

#### **NIGHT CLASS (MANDATORY)**

- In the Night Class (Monday to Thursday) of the IELTS Basic and Guaranteed Courses:
  - \*A 2-hour IELTS Daily mock test will be administered.
  - \*A 1-hour TOEIC Daily Voca test will be conducted.
- Reviews for daily tests will be held in 1:1 classes the following day, with comprehensive weekly reviews scheduled for Friday's Night Class.

#### **IELTS SAMPLE SCHEDULE**

CLASS TIME	SUBJECT	CLASS TYPE
08:00~08:50	Reading for IELTS	1:1 Class
09:00~09:50		BREAK
10:00~10:50	Listening for IELTS	1:1 Class
11:00~11:50	Speaking for IELTS	1:1 Class
12:00~12:50		LUNCH
13:00~13:50	Writing for IELTS	1:1 Class
14:00~14:50	GC Speaking	Group Class
15:00~15:50		BREAK
16:00~16:50	GC Listening	Group Class
17:00~17:50	Speaking Mock Test	Night Class
18:30~19:30	Writing Mock Test	Night Class
19:00~19:50		DINNER
20:00~20:50	Daily IELTS Voca	Night Class

#### **Monday & Wednesday**

5:00 – 6:00 p.m. Speaking mock test

6:30 – 7:30p.m. Writing Mock test

#### **Tuesday & Thursday**

5:00 – 6:00 p.m. Reading Mock Test

6:30 – 7:30p.m. Listening Mock Test



# WORKING HOLIDAY

This course is designed for students getting ready for a working holiday. It assists candidates in securing their desired job by emphasizing the acquisition of practical and useful phrases through extensive conversation practice tailored to various scenarios.

**Level:** No Restrictions

## Class time

1:1 classes – 4 classes

Group classes – 2 classes

Practical classes – 1 classes

Night Classes – 2 classes (optional)

**Test schedule once a month  
(including SP test)**

## LEARNING OBJECTIVES

- In our structured courses, we focus on improving speaking, listening, reading, and writing skills through hands-on learning experiences to prepare you for challenges during your working holiday program.

## RECOMMENDED TARGET

- Students aiming to enhance their English proficiency in preparation for an overseas working holiday
- Students seeking to gain practical English skills by mastering a variety of useful expressions



## WORKING HOLIDAY SAMPLE SCHEDULE

CLASS TIME	SUBJECT	CLASS TYPE
08:00~08:50	Writing	1:1 Class
09:00~09:50		BREAK
10:00~10:50	Listening	Group Class
11:00~11:50	Speaking	1:1 Class
12:00~12:50		LUNCH
13:00~13:50	Expression	1:1 Class
14:00~14:50	Reading	1:1 Class
15:00~15:50	Barista Training	Practical Class
16:00~16:50	Grammar	Group Class
17:00~17:50		DINNER
18:00~18:50	Sound Right	Night Class
19:00~19:50		BREAK
20:00~20:50	Vocabulary	Night Class

## NIGHT CLASS (OPTION)

- Vocabulary
- Speaking Pronunciation
- Fun with Conversation Grammar
- Sound Right
- Pattern English 1,2
- What Can I Say?

- Night Classes are available based on students' level and preferences.
- Each student can enroll in a maximum of two Night Classes.
- The Night Classes have a maximum capacity of 10 students.
- Registration for Night Classes is conducted locally and follows a first-come, first-served approach.

## 1:1 CLASS

- Speaking – Practical and beneficial for natural communication with non-native speakers: Acquire new vocabulary and expressions.
- Reading – Enhances reading comprehension and vocabulary, with each section covering engaging and relevant topics: Receive a printed guide and explore commonly used vocabulary and idioms.
- Idioms – Understand and learn idioms commonly used by non-native speakers: Discover how idioms are structured and their meanings.

Expression / Listening / Grammar / Writing:

*\*To enroll in these four subjects, kindly request separately during consultation with the coordinator. Available at no extra cost.*

## GROUP CLASS

- Pronunciation – This course teaches American speech rhythm, contracted words, colloquial contractions, and articulation. It focuses on mastering vowel and consonant sounds, intonation patterns, phrases, blends, and smooth transitions between nouns and verbs.
- Listening – The content spans various topics including everyday life and news, covering specific information, main points, elaboration, summarization, narrative structure, inferences, and predictions.
- Writing – We conduct a variety of writing activities to practice parts of speech, clause functions, and sentence structure.
- Grammar – Grammar classes consist of learning content within grammatical categories such as tenses, questions, and articles.

## PRACTICAL CLASS

- Barista Training
- Pizza Making
- Baking





# PARROT PROGRAM

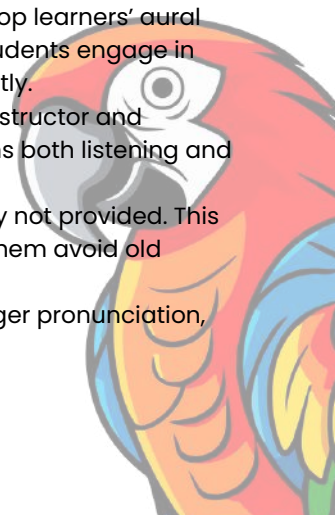


PARROT ESL is a focused pronunciation program within the ESL field, specifically designed to develop learners' aural sensitivity and improve their intelligibility in spoken English. Through a daily 25-minute session, students engage in targeted pronunciation practice that enhances their ability to communicate clearly and confidently.

The program is centered around the parroting technique, where students actively listen to their instructor and immediately mimic the sounds, stress patterns, and intonation they hear. This method strengthens both listening and speaking skills by promoting accurate sound reproduction.

To maximize the effectiveness of this technique, written guide notes or transcripts are intentionally not provided. This approach encourages students to rely solely on their listening skills rather than reading, helping them avoid old pronunciation habits and focus entirely on the natural sounds of English.

By immersing students in this sound-focused learning environment, PARROT ESL helps build stronger pronunciation, clearer speech, and greater confidence in real-life communication situations.







# SPEAKING PRESCRIPTION



The Speaking Prescription (SP) program is a structured and targeted training course designed to systematically enhance students' speaking and vocal abilities in English. Its primary goal is to help learners develop greater fluency, clarity, and expressiveness in their spoken communication. Through a variety of speaking exercises, voice training techniques, and guided practice sessions, students work on improving their pronunciation, intonation, rhythm, pacing, and overall vocal delivery.

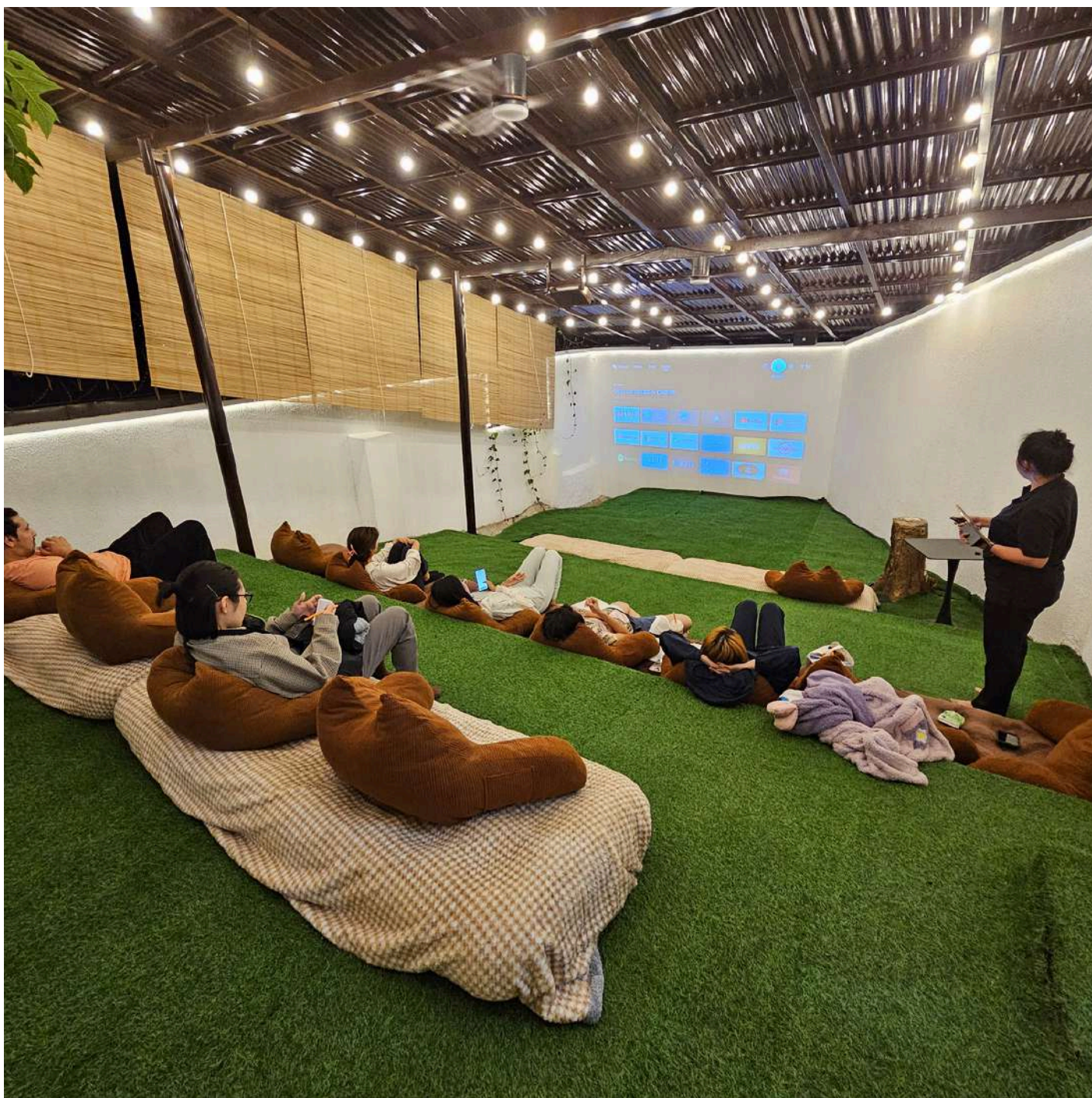
By addressing both the technical and expressive aspects of speech, the program not only strengthens linguistic accuracy but also builds the speaker's confidence in using English in a range of real-life situations—whether in academic settings, professional environments, or everyday conversations. Each session is carefully designed to support consistent progress, offering individualized feedback and practical strategies to overcome common speaking challenges.

Ultimately, the Speaking Prescription (SP) program empowers students to become more articulate, self-assured, and effective communicators in English.





# MOVIE NIGHT CLASS



## Movie Class

Time: 7:10 PM – 8:00 PM | Venue: Outdoor Cinema

Experience learning English in a fun and interactive way with our Movie Class, held in a cozy outdoor cinema setting! This unique class helps students improve vocabulary, listening, and speaking skills through the exciting world of movies. Each week follows a four-day schedule:

On Monday, students will be introduced to the movie of the week and learn useful vocabulary and phrases found in the film. Tuesday is all about movie highlights, where selected scenes are shown to help students focus on key moments. On Wednesday, students watch the full highlights at the outdoor cinema, allowing them to listen to natural conversations and enjoy the movie experience. Finally, on Thursday, students will take part in Q&A, games, and discussions to share their thoughts, answer questions, and have fun interacting with classmates.

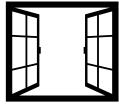
Join us under the stars and make learning English an enjoyable cinematic journey!



# STUDENT'S DORMITORY



WIFI



WINDOW



CLOSET



DESK



REFRIGERATOR



SHOWER



HAIR DRYER



Twin Room



Triple Room



Quad Room



Shower Room



Shared Bathroom







Dining Area





# SINGLE ROOM TYPE DORMITORY



WIFI



BALCONY



CLOSET



DESK



REFRIGERATOR



SHOWER



HAIR DRYER



STAND LAMP



KITCHEN

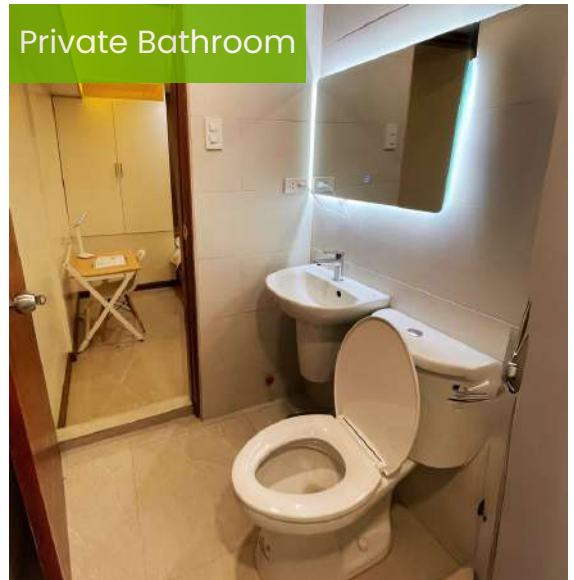
## ROOM TYPE

The dormitory is designed like an apartment, featuring a living room and kitchen. It consists of master single rooms with an attached bathroom and regular single rooms without an attached bathroom (the shared bathroom is located in the living room).

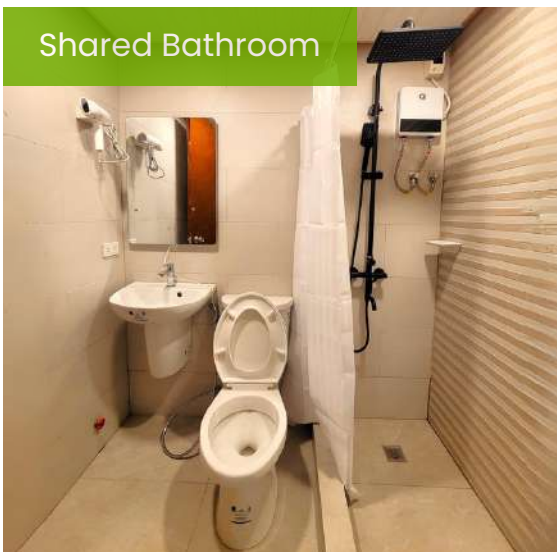
Master Single



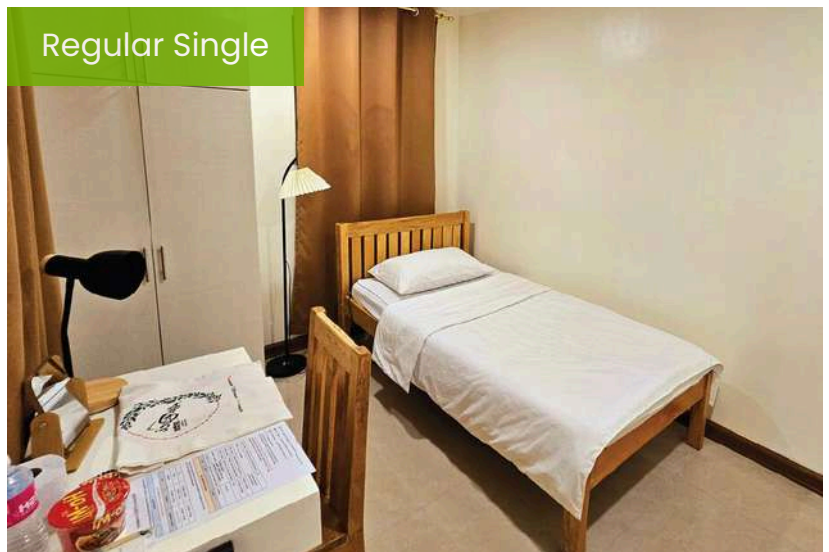
Private Bathroom



Shared Bathroom



Regular Single

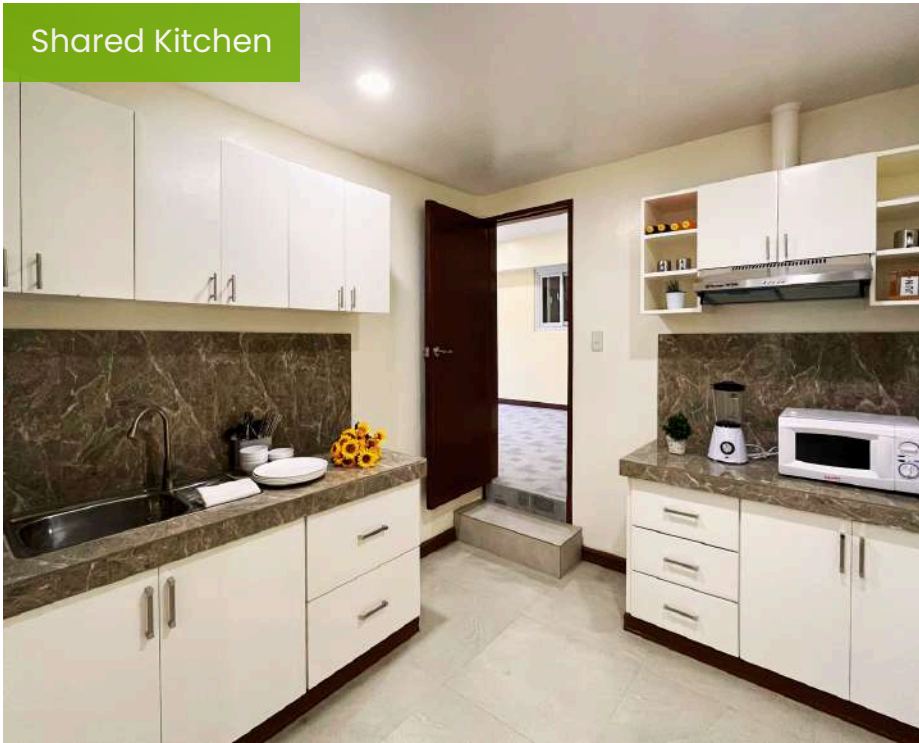


The single-room dormitory at Café is conveniently located just a 30-second walk from EOP Campus.

**We offer both premium and standard options for all genders.**



Shared Kitchen



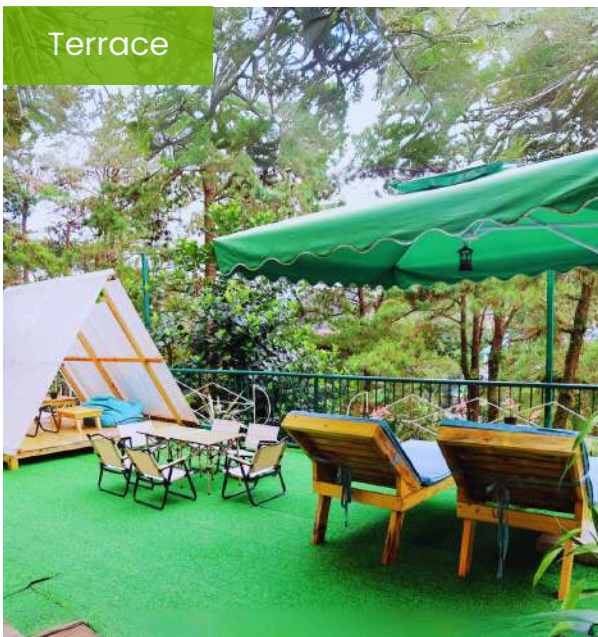
Shared Living Room



Massage Room



Terrace



Single Room Type Dormitory





# FEMALE DORMITORY



WIFI



PUBLIC BALCONY



CLOSET



DESK



REFRIGERATOR



SHOWER



HAIR DRYER



STAND LAMP



PUBLIC KITCHEN

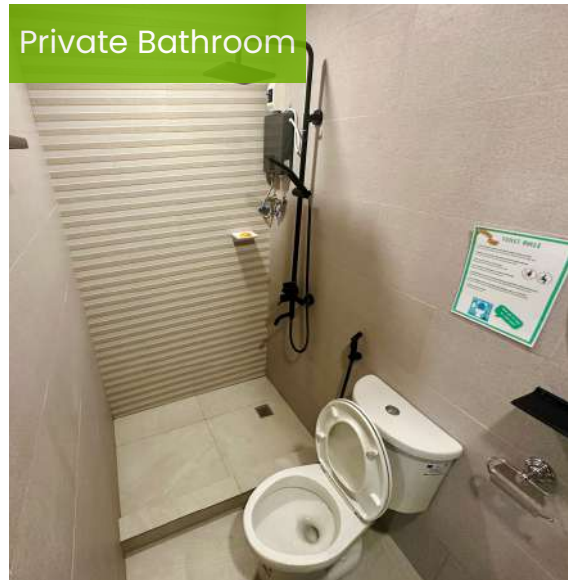
## ROOM TYPE

The newly designed girls' dormitory resembles an apartment, featuring a shared living room and kitchen. Each room includes a private bathroom, and the common areas offer a spacious living room and kitchen. Best of all, there's a large balcony.

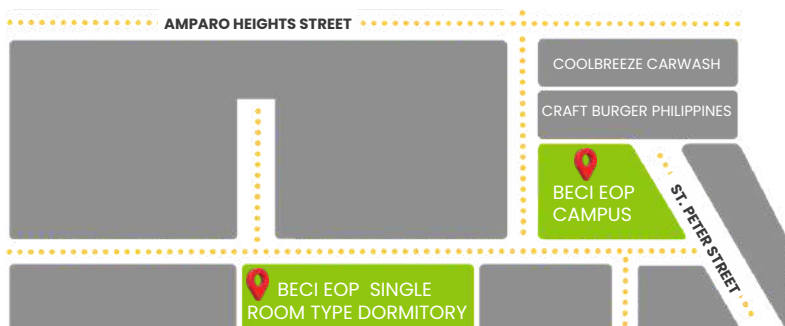
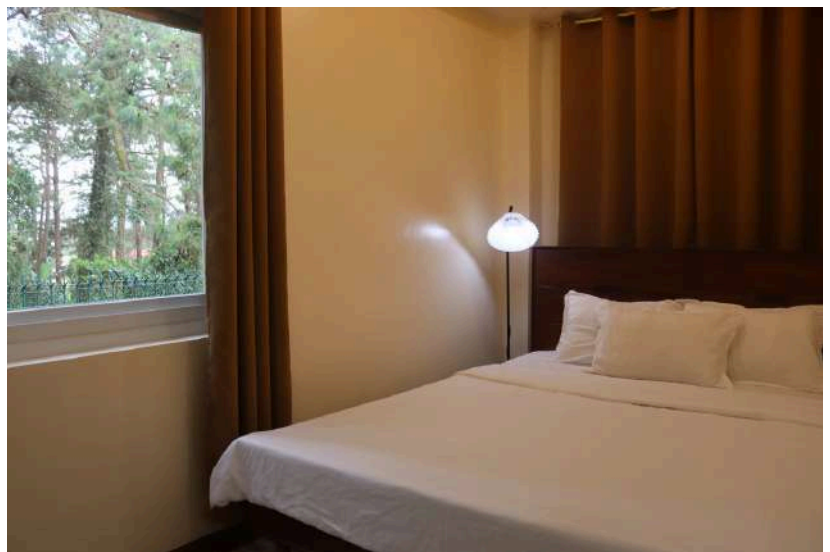
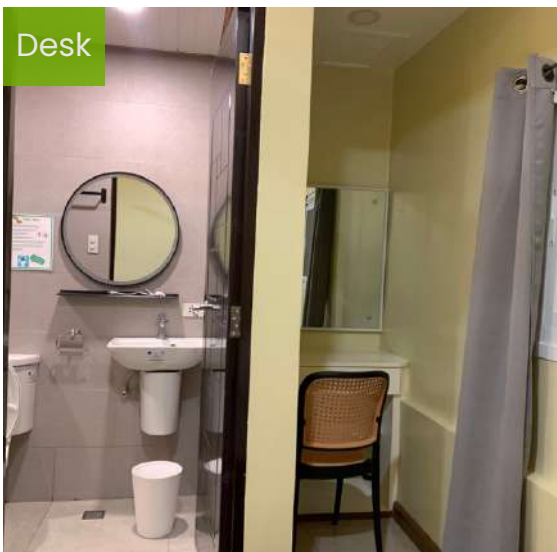
Master Single



Private Bathroom



Desk

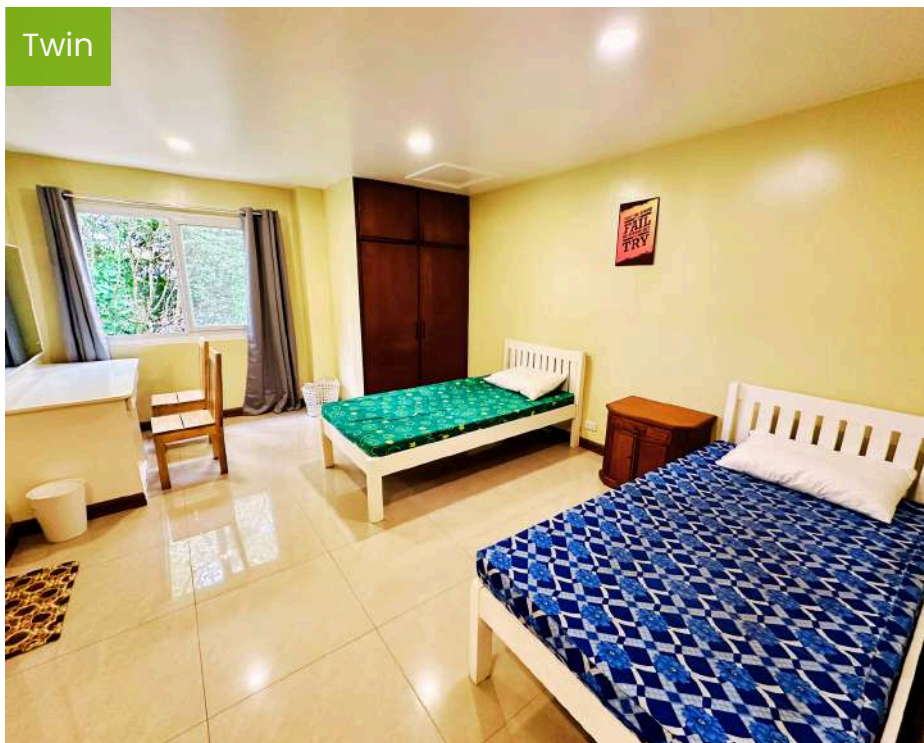


The dormitory is conveniently located just a 30-second walk from EOP Campus.

**Introducing our new dormitory on EOP Campus! We offer both premium and standard options exclusively for females.**



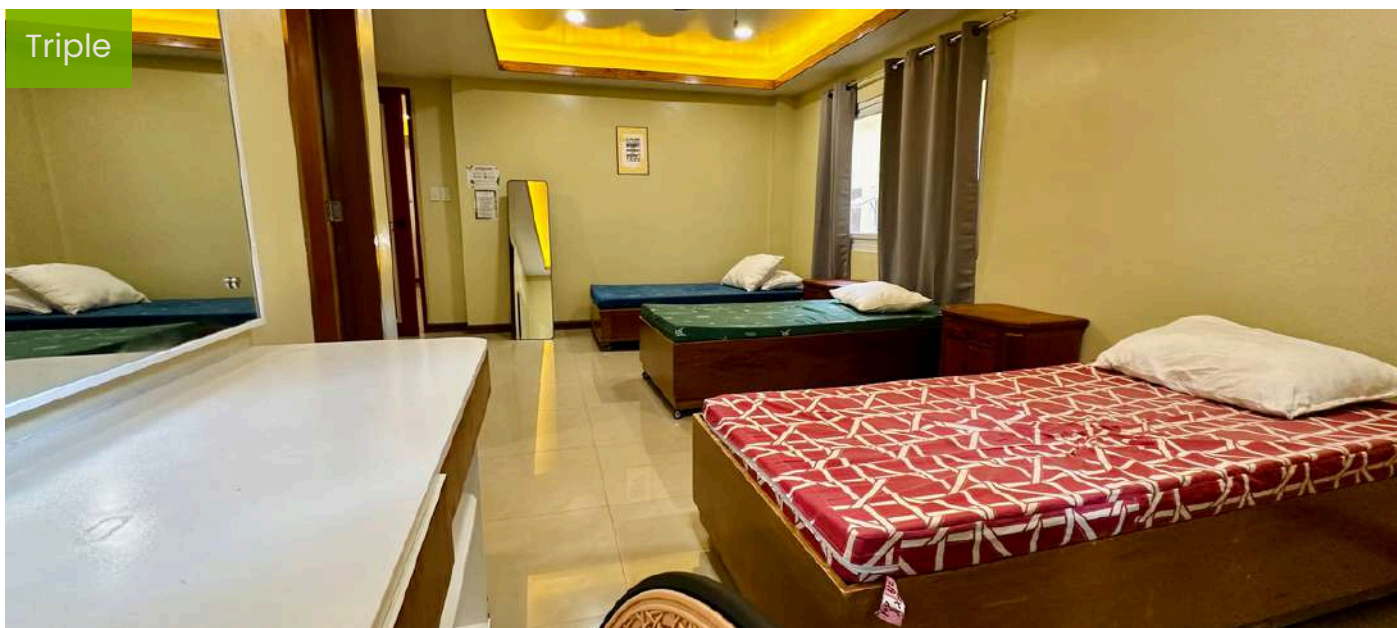
Twin



Shared Bathroom



Triple



Shared Kitchen



Shared Living Room





# ACADEMY AREA

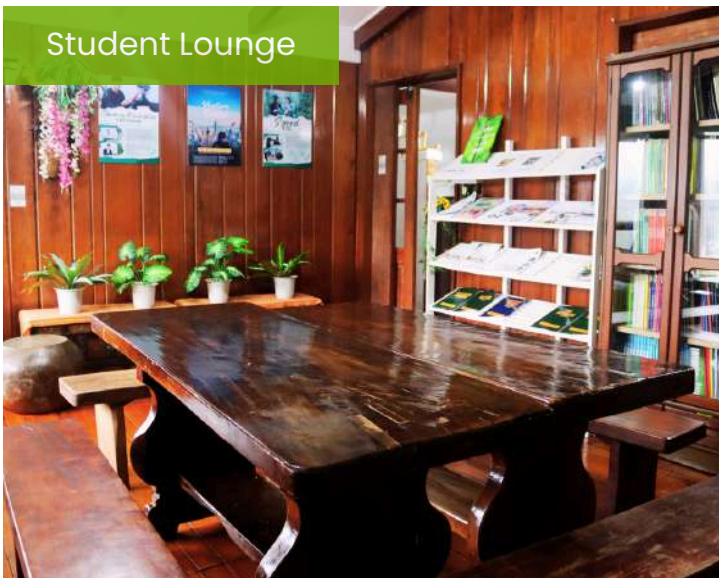
1:1 Classroom



Group Classroom



Student Lounge



Hallway





SP Center



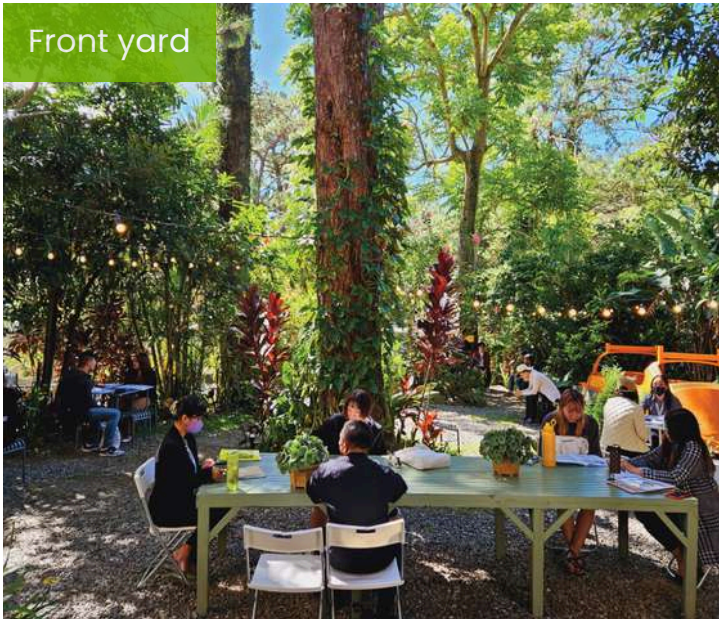
SP Test



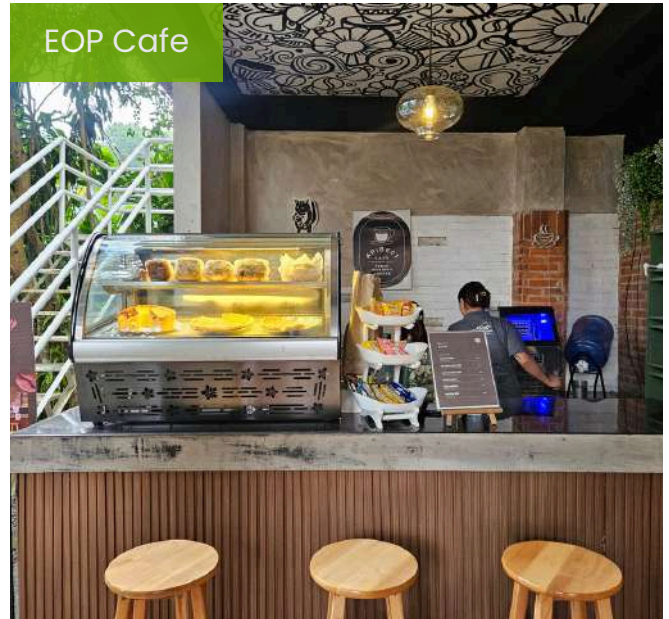


# FACILITIES

Front yard



EOP Cafe



Terrace





View Deck



Gym



Outdoor Cinema





# BECI'S REGULATIONS

## ACADEMIC REGULATIONS

\*Excerpts from Orientation Materials\*

### 1. CLASS HOURS

- Regular class: Monday to Friday (50 mins / 10 mins break)
- Night class: Monday to Thursday (50 mins / 10 mins break)
- Night class schedule: between 6:20pm to 21:00pm.
- The start time may be different for each student.

### 2. CLASS RULES

- The school provides a minimum of 18 academic days per month.
- Make up classes will be given in case the school failed to meet the minimum number of classes in a month. The schedule for the make up class will be posted in the bulletin board.

#### NOTE

1. No classes during Philippine holidays.
2. The school is not responsible for natural disasters such as typhoons, earthquakes etc. Make up classes is upon the school's discretion in case the make up classes are not possible due to some circumstances.
3. For students who missed their classes due to personal reasons, make up classes are not given.

### 3. ABSENCES AND TARDINESS

- If you are absent due to personal concerns, you must follow the schedule and absence application procedure with the scheduler at the INFORMATION DESK at least one hour before the start of the class.
- 10 minutes late is considered absent.
- More than 3 absences in a class will result to cancellation and will be allowed to take it after 4 weeks.
- If the teacher is not in the class within 5 minutes, please go to the administration office and report it.

## HOUSE RULES

### 1. GOING OUT AND CURFEW

SPEED ESL , LITE ESL							24 ESL, TOEIC & IELTS COURSE						
Sun	Mon	Tue	Wed	Thur	Fri	Sat	Sun	Mon	Tue	Wed	Thur	Fri	Sat
6am to 10pm	5pm to 10pm				5pm to 2am	6am to 2am	6am to 10pm	Not allowed to go out				5pm to 2am	6am to 2am
The day before holiday							Holiday						
5pm to 2am							6am to 10pm						

- City Campus does not have a curfew.
- Every Saturday from 2AM to 6AM, the gate will be strictly closed.
- On Saturday, if there is a makeup class, weekday rules apply. When entering and leaving the school, leave the room key and ID card at the gate, fill in the form provided.
- At the gate, the staff of the school may voluntarily carry out checking of personal belongings.

#### 1.1 HALL PASS

- SEMI-SPARTA students are allowed to go out during weekdays from 5:00 pm as long as they do not have night classes.
- If students need to go out before 5:00 pm due to urgent matters or justifiable reasons, they are allowed to go out only if the HALL PASS is approved.



## 2. TRAVEL WAIVER AND OVERNIGHT PERMIT

- Staying out overnight during weekends, fill in and submit the OVERNIGHT PERMIT.
- If you are traveling on a flight, fill in and submit the TRAVEL WAIVER with the manager's signature.
- The issuance of TRAVEL WAIVER and OVERNIGHT PERMIT is in Academic building until 4pm UNTIL EVERY Thursday ONLY.
- Staying out overnight during weekdays is not allowed.
- Even if you have OVERNIGHT PERMIT, you are not still allowed to enter the school during curfew hours.

NOTE: You must have a copy of the hotel confirmation or air ticket reserved under student's name to issue a permit. In addition, the academy is not responsible for accidents that occur during the trip.

## 3. KITCHEN

### BECI EOP Students

- Students under the influence of alcohol are not allowed to use the kitchen. A penalty of 3,000 pesos will be imposed immediately in case of violation.
- If you want to use the dining hall personally, you need to fill out the kitchen-use permit and get approval from the school administrator.

### BECI SPARTA CAMPUS

- students are not allowed to use the kitchen.
- The dining hall on the first floor can be used as a self-study space outside of meal time.
- Kitchenware cannot be taken out and is liable for damages

## 4. DORMITORY

- Dorms are assigned by the academic administrator.
- Personal supplies and toilet paper are not provided by the academy.
- The loss and damage of the academy's property caused by the carelessness of the student shall be compensated with the same items.
- Requests to change the dormitory room can be applied at the ADMIN OFFICE every Wednesdays until 16:00, and can be changed depending on vacancies.
- Dormitory movement is possible on the afternoon of Saturdays or Sundays when the change is approved.
- Cooking in the dormitory is prohibited, and the use of any devices or appliances that produce fire and strong heat is prohibited.

NOTE: For the safety and convenience of students, academic managers can enter the dormitory without prior notice and consent to students.

## 5. LAUNDRY SERVICE

- Laundry service is provided with laundry fees.
- PHP 1,500 / 4weeks
- Shoes, bags, hats, and blankets are not included in the laundry service. Extra charges apply.
- Minimum 1kg Maximum 7kg
- Do not share your unlimited service with others. (Violations will result in service suspension with no refund.)
- The laundry shop has its date and time for collecting and delivering the laundry.

### A. HOW TO USE

- Before you leave your laundry, fill out the laundry slip. (Please place the laundry slip inside your laundry bag.)

### B. LOST AND DAMAGED

- If there is no laundry slip, it is not possible to report the loss
- If the laundry is lost, you can check it at the admin office.
- For expensive garments, we do not advice washing.

NOTE: For clothes that require special care, you may bring it to another laundry shop to get the specific service



apibeci international academy

# EOP CAMPUS

## The All New BECI Campus

Find peace at Healing Campus –  
EOP Campus Baguio. Enjoy forest  
café vibes, garden views, and a  
cozy View Deck Cottage

